



Drawer Units – Lock ‘n Latch System
18”W x 12”H x 12”L steel cabinet with composite drawers. New drawer glides for better operation.

MODEL	DESC. & DRAWER SIZE (QTY.)
19	2 Drawer Medium 16”W x 5”D x 11-1/2”L (2)
919	3-Drawer Unit w/ Lock
9	4-Drawer Unit w/ Lock (4)
27	Drawer Divider Assembly

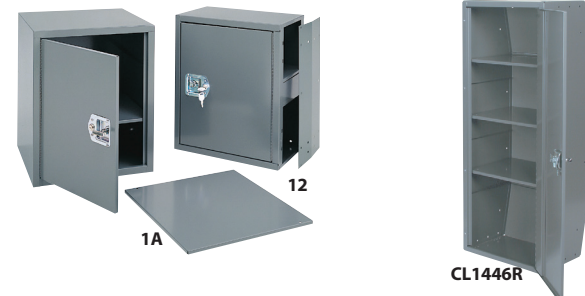
Drawer Units – Locking Hinge & Hasp
#2 measures 18”W x 24”H x 18”L #8 measures 18”W x 18”H x 12”L

MODEL	DESC. & DRAWER SIZE (QTY.)
8	3-Drawer Unit (3)
2	4-Drawer Unit (4)
25	Drawer Divider Assembly
26	Drawer Divider Assembly

Drawer Components
High-impact polymer construction with drawer retention stops.

MODEL	DESC. & CABINET SIZE
DC6	3-Drawer Unit 6”W x 12”H x 12”D
DC12	3-Drawer Unit

Interlocking feature allows up to 2 units stacked vertically or multiple units horizontally.
5lb. weight capacity per drawer.

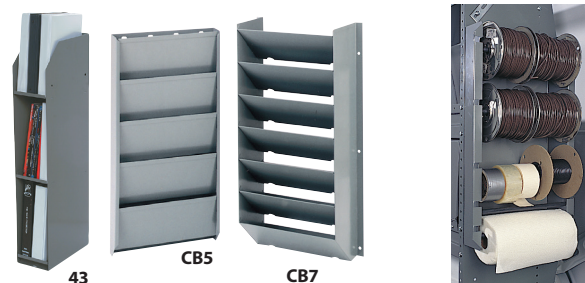


Shelf Cabinets can be used free standing or are perfect for stacking with our lockable drawer units.

MODEL	DESC. & CABINET SIZE
1	Adjustable Single Shelf Cabinet w/Lock
12	Adjustable Single Shelf Cabinet w/Lock
1A	Cabinet Shelf
12A	Cabinet End Panel

Cabinet Lockers
Lockers feature a 46” high storage space with removable shelves.

MODEL	DESC. & CABINET SIZE
CL1446R	Adjustable 3-Shelf Cabinet w/ Lock



3 3-Shelf Literature Rack
Overall size: 6”W, 34”H, 12”D.

CB5 5-Slot Literature Rack
Overall size: 12”W, 24”H, 2-1/2”D.

CB7 7-Slot Literature Rack
Overall size: 14-3/4”W, 28-7/8”H, 7”D.

WRH5 5-Bar Spool Holder Five removable bars hold wire spools up to 6” in diameter. Reel Holder mounts to shelf ends for convenient access.

Overall size: 12”W, 25”H, 4”D



QUALITY

- Our products are durable and reliable. Warranty claims are less than 1% of sales.
- Our warranty covers our products for three years or 36,000 miles.

INNOVATIVE PRODUCTS WITH FEATURES THAT MATTER

- Drawers that stay closed while in transit.
- ADseries truly adjustable shelving platform.
- Drop Down and Grip Lock ladder racks that load and unload the safe and right way.
- Interior ladder storage.
- Plug and Play accessories.
- Anti-slam drawer latches, and much more!

COMMITMENT

- At Adrian Steel, we are committed to you beyond the upfit!
- A dedicated Customer Care Team at corporate headquarters.
 - A network of highly qualified distributors to support you locally.
 - Our commitment to provide the best cargo management solutions in North America.



EXPERIENCE

- **Over One Million vans upfitted**, and counting! It's a fact that an organized vehicle increases work flow efficiencies and reduces inventory damages.
- Recognized as a National Truck Equipment Association MVP.

SERVICE

- Adrian Steel Products can be purchased throughout North America at authorized Adrian Steel distributors.
- Adrian Steel Customer Service Representatives are available M-F, 8am - 5pm EST at 1-800-677-2726.
- E-mail us at info@adriansteel.com with questions, comments and feedback.
- Visit AdrianSteel.com for the most up-to-date product information, distributor locator, product catalogs, videos and more.



adriansteel.com

800-677-2726

906 James St. Adrian, MI 49221

adriansteel.com

800-677-2726

906 James St.
Adrian, MI 49221

WALK IN PRODUCT CATALOG

SHOW YOUR PROFESSIONALISM WITH AN ORGANIZED VAN!

Adrian Steel has the shelving and modules you need to get your stuff off the floor. Organize inventory on divided shelves and keep tools locked in drawers and cabinets. Customize the interior of your vehicle with the storage solutions you need.



The **HD (heavy-duty) Series** contains five adjustable shelves. Shelf gussets, end panel braces and full floor-rail provide extra strength.

The **JD (Jumbo Deep) Series** feature channel reinforced shelf bottoms, 4" deep shelf lips, and square end panels.

OPTIONAL SHELF ACCESSORIES	
DV14	Shelf Divider
DKS32	Door Kit w/ Back Panel
DKS42	Door Kit w/ Back Panel
DKS52	Door Kit w/ Back Panel

MODEL	OVERALL SIZE	OPEN SHELF SPACE
HD-52WP	52" 60" 14"	25.28 sq ft

MODEL	OVERALL SIZE	OPEN SHELF SPACE
JD42WP	42" 60" 18"	15.75 sq ft
JD52WP	52" 60" 18"	19.50 sq ft
JD48WP	48" 60" 24"	24 sq ft
JD60WP	60" 60" 24"	30 sq ft

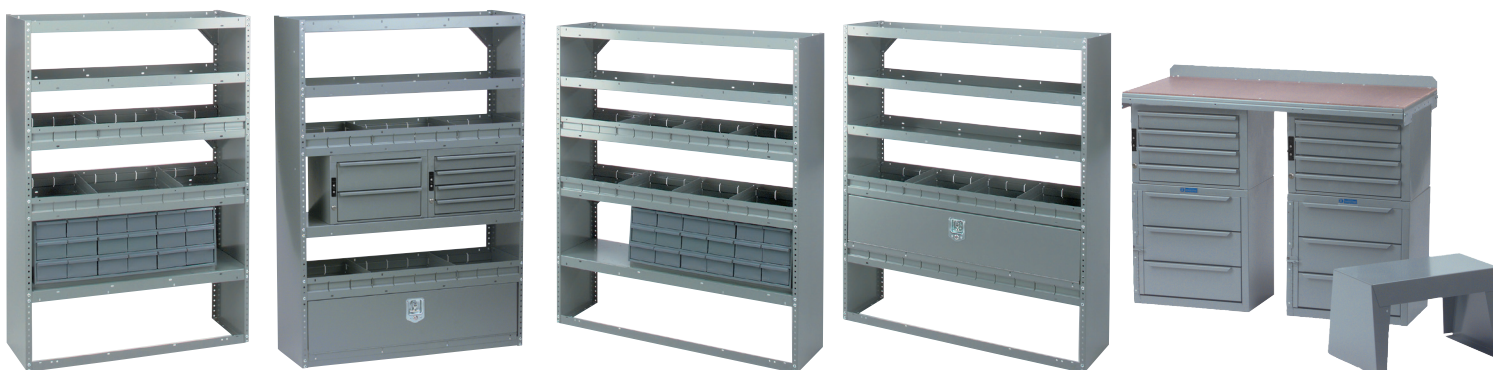


MD701 Cabinet & Drawer Module has four locking cabinets, parts tray on top, and four medium drawers. Measures 36" W, 58" H, 12"/18" D.

MD702 Cabinet & Drawer Module has parts tray on top, two locking cabinets, eight small and eight large drawers.



Measures 36" W, 60" H, 12"/18" D.



MD703 5-Shelf Storage Unit provides divided shelf storage along with 18 small parts drawers. Measures 42" W, 60" H, 14" D.

MD704 5-Shelf Unit features lockable wheelhouse cover, divided shelves, four small and two medium drawers. Measures 42" W, 60" H, 14" D.

MD706 5-Shelf Unit provides divided shelf storage along with 18 small parts drawers. Measures 52" W, 60" H, 14" D.

MD707 5-Shelf Unit features shelving in addition to lockable compartment. Measures 52" W, 60" H, 14" D.

MD705 Workbench Module has masonite covered worktop, stool, shallow and medium drawers. Measures 42" W, 32" H, 12"/18" D.

Modules come complete with installation instructions and fasteners. Some drilling is required. Installation should always be made to a body frame member or reinforcement to the body for secure attachment.

CL1860 STORAGE LOCKER

Features two hinged doors with a two point locking system to secure stored items, three bolt in shelves and a bolt in steel back panel. Shown with optional parts tray. Measures 60"H x 18"D x 36"W.



- Large Capacity
- Secure Storage

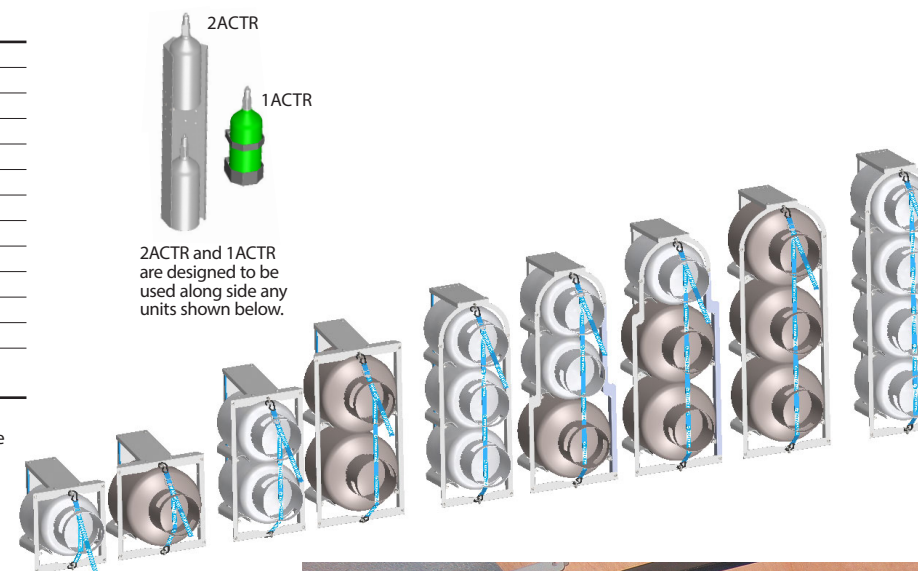


OUR MOST FLEXIBLE AND ERGONOMIC TANK RACK SYSTEM, EVER.

The all-new Adrian Steel EZLoad™ Tank Racks are a revolution in design, ergonomics, and real-life use. The modular, patent pending design allows you to build a perfect configuration of 30-50 lb. tanks and/or acetylene tank options based on what you need carry. You can stack, mix and match or add top trays to find the best configuration for your business.

MODEL	HOLDS
130TR	(1) 30 lb. Tank
230TR	(2) 30 lb. Tank
330TR	(3) 30 lb. Tank
430TR	(4) 30 lb. Tank
150TR	(1) 50 lb. Tank
250TR	(2) 50 lb. Tank
350TR	(3) 50 lb. Tank
130150TR	(1) 30 lb. (1) 50 lb. Tank
130250TR	(1) 30 lb. (2) 50 lb. Tank
230150TR	(2) 30 lb. (1) 50 lb. Tank
1ACTR	(1) Acetylene Tank Holder
2ACTR	(2) Acetylene Tank Holder
BAGST	Stacking Fastener Bag
	*MUST HAVE IF STACKING UNITS

*Please confirm the location of the tank rack and tray, some interior locations will not accommodate the tray due to the contour of the vehicle.



LADDER KEEPER

Store ladders inside your walk-in van with the **Ladder Keeper**. Keep ladders out of the elements and off the floor. Adjusts to fit all ladder types and lengths. Gas spring compresses ladder for quiet and secure transportation. LK8 Includes all parts needed to carry up to an 8' ladder. To accommodate larger vehicles or ladders, you will require the LKX extension that provides 4' of additional track.

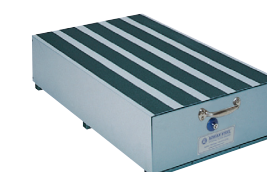


ADRIAN'S Floor Drawer IS THE FINEST FLOOR STORAGE UNIT YOU CAN BUY

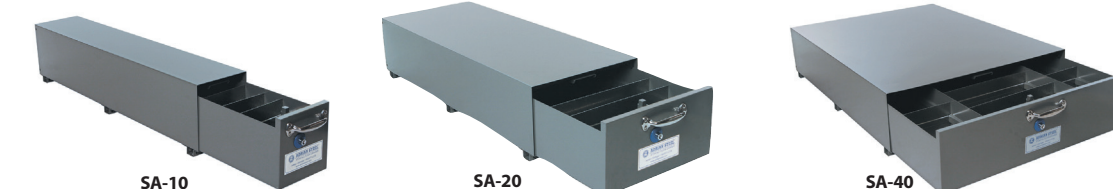
- 14 Gauge steel outer cabinets are constructed with top channel cross support members for strength and rigidity.
- Drawers are constructed with double sidewalls to prevent bowing and to accommodate items up to 48" in length.
- The anti-slam latch stops drawers from completely closing without positive latch activation.
- Heavy-duty grab handle and push button lock allows for comfortable, one-handed drawer operation.
- Durable powder coat finish will provide years of rugged service.
- Easy glide drawers with full width recessed conveyor roller at front and hardened steel roller bearings at rear.
- Install at rear or side doors, and units can be stacked.
- Keeps expensive tools safe and secure.



- Anti-Slam Latch
- HD Grab Handle
- Push Button Lock

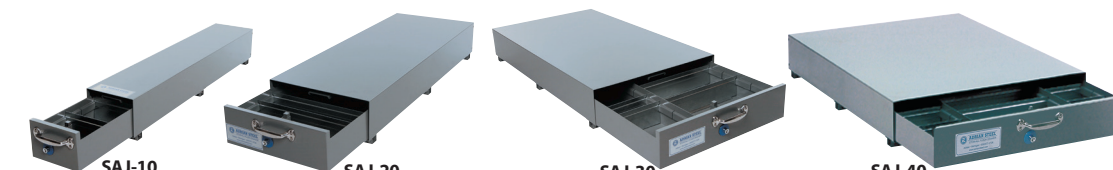


Traction Kits are available to provide a positive friction surface for better footing. Traction Kits come with 4" wide strips. **Additional Dividers** are available and sold individually.



FLOOR DRAWER DEEP SERIES

MODEL	DESCRIPTION	CABINET SIZE	DRAWER SIZE	DIVIDER (QTY.)
SA-10	Single Compartment Floor Drawer	10"W x 12"H x 51-1/2"D	9-5/8"W x 8-1/2"H x 48-1/2"D	DV9(5)
SA-20	Single Compartment Floor Drawer	20"W x 12"H x 51-1/2"D	19-5/8"W x 8-1/2"H x 48-1/2"D	DV19(5)
SA-40	Triple Compartment Floor Drawer	40"W x 12"H x 51-1/2"D	9-5/8"W x 8-1/2"H x 48-1/2"D (2)	DV9(10)
			19-5/8"W x 8-1/2"H x 48-1/2"D	DV19(5)



FLOOR DRAWER SHALLOW SERIES

MODEL	DESCRIPTION	CABINET SIZE	DRAWER SIZE	DIVIDER (QTY.)
SAJ-10	Single Compartment Floor Drawer	10"W x 8-1/2"H x 51-1/2"D	9-5/8"W x 5-1/4"H x 48-1/2"D	DVJ9(5)
SAJ-20	Single Compartment Floor Drawer	20"W x 8-1/2"H x 51-1/2"D	19-5/8"W x 5-1/4"H x 48-1/2"D	DVJ19(5)
SAJ-30	Double Compartment Floor Drawer	30"W x 8-1/2"H x 51-1/2"D	9-5/8"W x 5-1/4"H x 48-1/2"D	DVJ9(5)
SAJ-40	Triple Compartment Floor Drawer	40"W x 8-1/2"H x 51-1/2"D	9-5/8"W x 5-1/4"H x 48-1/2"D (2)	DVJ9(10)

